



双排角铝支架

产品说明/DESCRIPTION:

- 安装位置/Installation place:  
地面/平面屋顶/Ground / flat roof
- 斜面支架组件/Module slop:  
根据实际需求/According to the practical demand
- 风力承载能力/Wind load:  
40m/s、32.5kg/m<sup>2</sup>、13级
- 雪载承受力/Snow load:  
70kg/m<sup>2</sup>
- 支架类型/Module type  
框架/Frame
- 材料/Material:  
铝型材/Aluminium profile
- 颜色/Colour:  
本色/Natural
- 使用年限/Warranty time:  
25 years.

本系统由以下零部件组成/This system consists of the following components:



- ADVANTAGES:**
1. 容易安装/Easy installation.
  2. 它不破坏植被/It does not damage the vegetation.
  3. 强度高, 安装范围广/High strength, wide range of installation

工程实例照片



1 第一步/First step

The base is fixed on the embedded concrete pier, in the angle of the aluminum part is fixed by the bolt M8\*30, the diagram below: 将底座固定在预埋好的水泥墩上, 再将角铝部分用M8\*30的螺栓固定, 如图1所示:



Figure 1(a)

节点图/Node graph:



Figure 1(b)

Figure 1(c)

2 第二步/Second step

The guide rail with T type bolt M8\*25 fixed on the oblique beam. The following diagram: 将导轨用M8\*25的T型螺栓固定在斜梁上. 如下图:

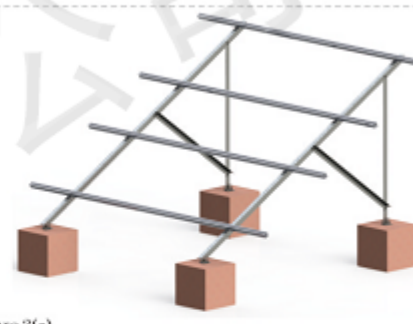


Figure 2(a)

固定节点图:  
Fixed node graph:

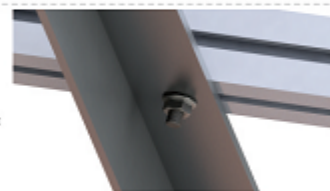


Figure 2(b)

3 第三步/Third step

Using M8\*30 bolt will be fixed in the post after the cable-stayed column. The following diagram: 用M8\*30的螺栓将后斜拉固定在后立柱上. 如下图:

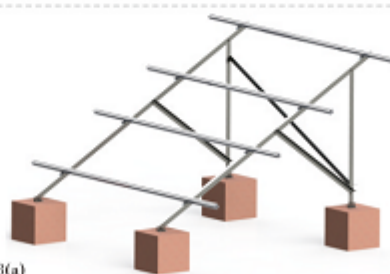


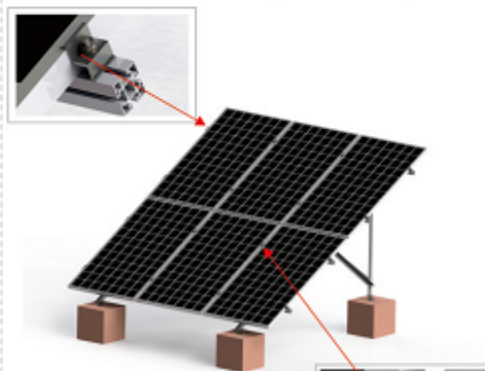
Figure 3(a)

节点图/Node graph:  
Figure 3(b)



4 第四步/Fourth step

Using the edge block, block, pressure type T bolts and nuts with flange component is fixed on the guide rail. The following diagram: 用边压块、中压块、T型螺栓及法兰螺母将组件固定在导轨上. 如下图:



The installation is finished.  
安装结束完成。

